

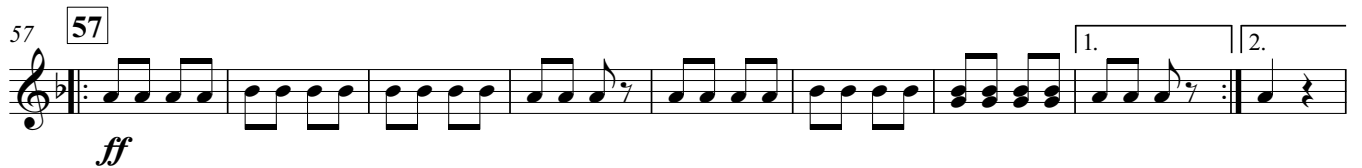
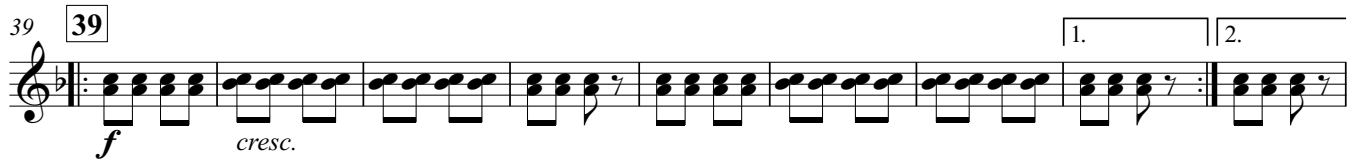
# FARANDOLE

Corno F I-II

Da "L'Arlésienne Suite n. 2"

Georges Bizet

Allegro deciso (Tempo di marcia) ♩ = 120



76 76 84  
  
*ff*

92 92 100 108  
  
*mp cresc.*

115 115 123  
  
*sempre cresc. f*

128  
  
*f*

134 134  
  
*ff*

144 144  
  
*ff*

155 155  
  
*fff*

164 164  
  
*fff*

172 172  
  
*fff*

180 180  
  
*p cresc. subito molto fff*